



Sol Duc River



Sol Duc Falls Trail



Bogachiel River/Trail (#825)



Quinault Nature Trails (#855)

Proposed Wilderness  
 Potential Wilderness  
 Proposed Wild & Scenic Rivers  
 National Forest Wilderness  
 National Forest  
 National Park  
 Other Land  
 Lakes  
 Rivers and Major Streams  
 Highways  
 Other Roads

Cartography by  
 CORE GIS  
 www.coregis.net  
 Date: June 28, 2016  
 Data: Olympic National  
 Forest, USGS

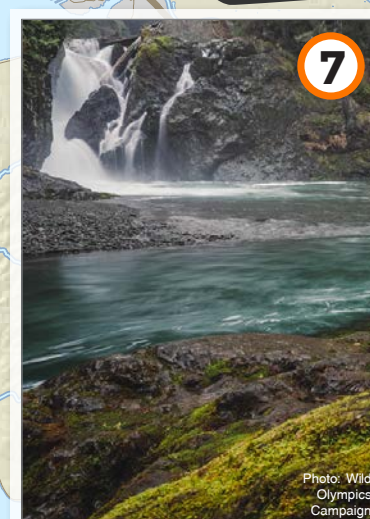
0 2 4  
 Miles



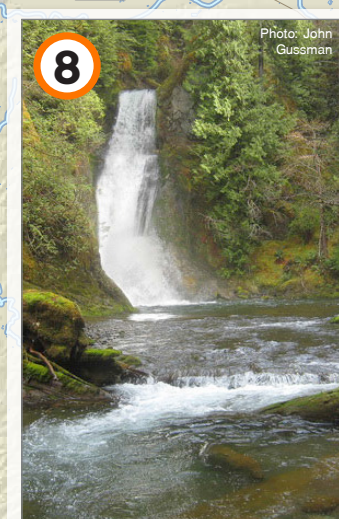
West Fork Humptulips River/Trail (#806)



East Fork Humptulips River



Wynoochee Falls Trail



Spoon Creek Falls Trail (#885)



Church Creek Trail (#871)



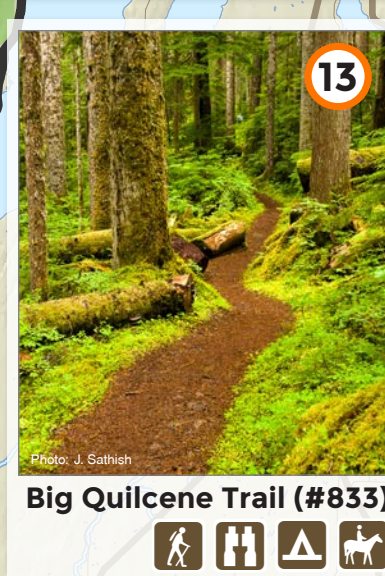
Upper South Fork Skokomish Trail (#873)



Lena Lake Trail (#810)



Mt. Elinor Trail (#812)



Big Quilcene Trail (#833)



Upper Dungeness Trail (#833.2)



Dungeness Gold Creek Loop (#830)



Dungeness River



Dungeness Spit

# DESTINATION Wild Olympics

The World-Class Outdoor Recreation Destinations of the Wild Olympics Wilderness and Wild & Scenic Rivers Act







# PASSES AND PERMITS

This map is intended to help you access hikes and sights on the Olympic Peninsula. Green Trails Maps are recommended for navigational purposes on hiking trails. You can purchase Green Trails Maps online at [www.greentrails.com](http://www.greentrails.com).

**National Forest Recreation Day Pass:** \$5. Required at all Forest Service day use or entrance fee sites in Washington or Oregon. Available at National Forest offices and visitor centers, via private vendors, or [www.discovernw.org](http://www.discovernw.org).

**Northwest Forest Pass:** \$30. Annual pass honored at all Forest Service day use or entrance fee sites in Washington or Oregon. Available at National Forest offices and visitor centers, via private vendors or [www.discovernw.org](http://www.discovernw.org).

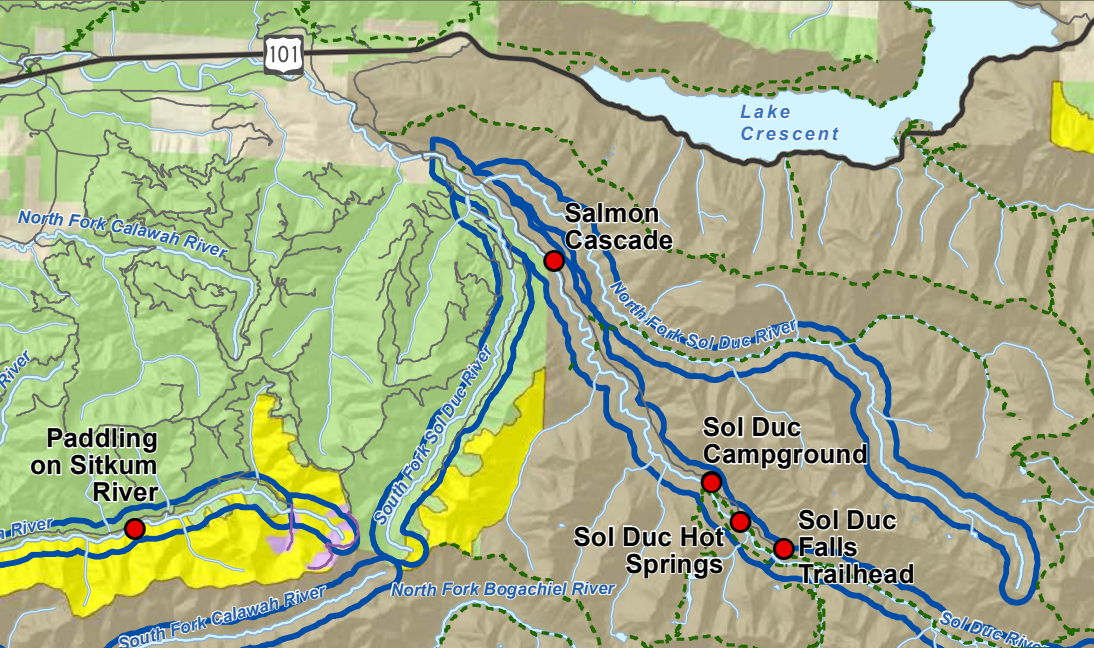
**Interagency Annual Pass:** \$80. Annual pass honored at all federal recreation sites charging day use or entrance fees. Available at National Forest offices or [www.discovernw.org](http://www.discovernw.org).

**Interagency Senior Passes:** \$10. Lifetime pass for those 62 and older honored at all federal recreation sites charging day use or entrance fees. Passes issued in person; available at National Forest offices.

**Interagency Military Pass, Interagency Access Pass.** Free. Passes for active duty military and their dependents as well as individuals with a permanent disability honored at all federal sites charging day use or entrance fees. Passes issued in person; available at National Forest offices.

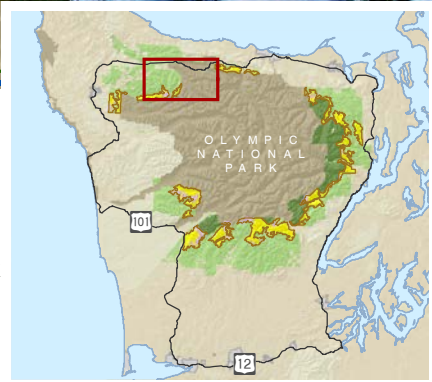
**Discover Pass:** \$35 annual, \$11.50 daily. Required at Washington state-managed recreation lands. Available at [www.discoverpass.wa.gov](http://www.discoverpass.wa.gov), in person from any hunting or fishing license vendor, and by phone: (866) 320-9933. None of the featured hikes on this map require a Discover Pass.

[www.WildOlympics.org](http://www.WildOlympics.org)  
PO Box 214, Quilcene, WA 98376



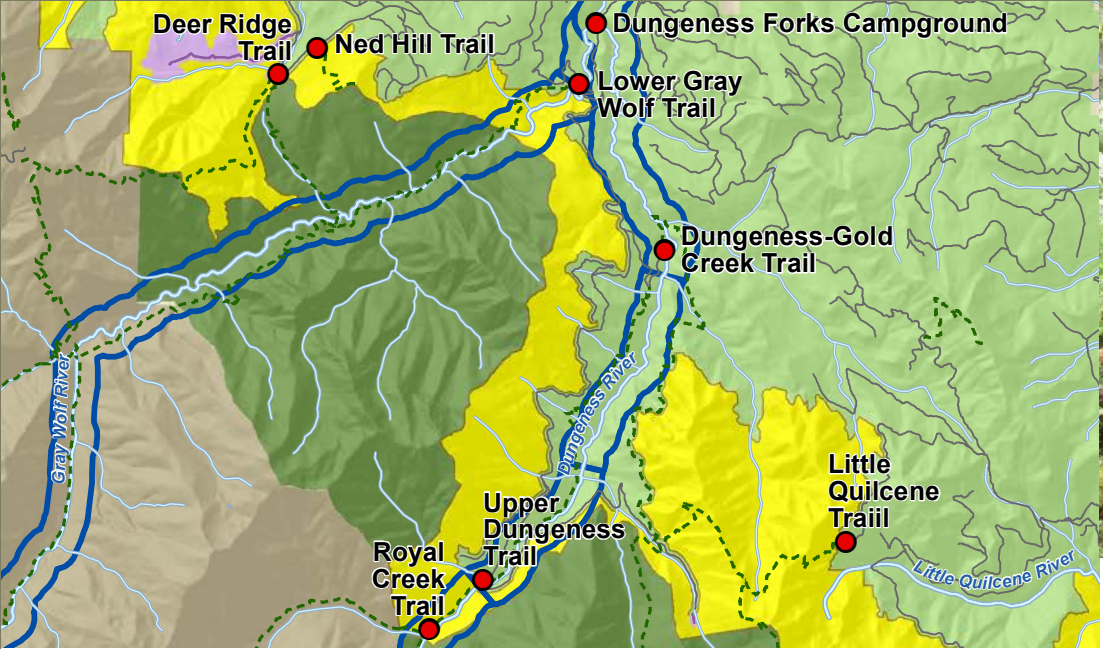
## SOL DUC VALLEY

The proposed **Sol Duc Wild and Scenic River** in Olympic National Park has extensive opportunities for family-friendly recreation in the river corridor. The picturesque Sol Duc Falls Trail is a great hike for kids. For those spending time in the valley, the Sol Duc Campground is a great base for explorations. The developed Sol Duc hot springs provides a relaxing soak after a day on the trail. In fall, maples along the river corridor show off their colors and Salmon Cascade serves as a popular salmon viewing spot. Once the rains arrive, the Sol Duc is one of the more popular intermediate whitewater runs on the Olympic Peninsula.



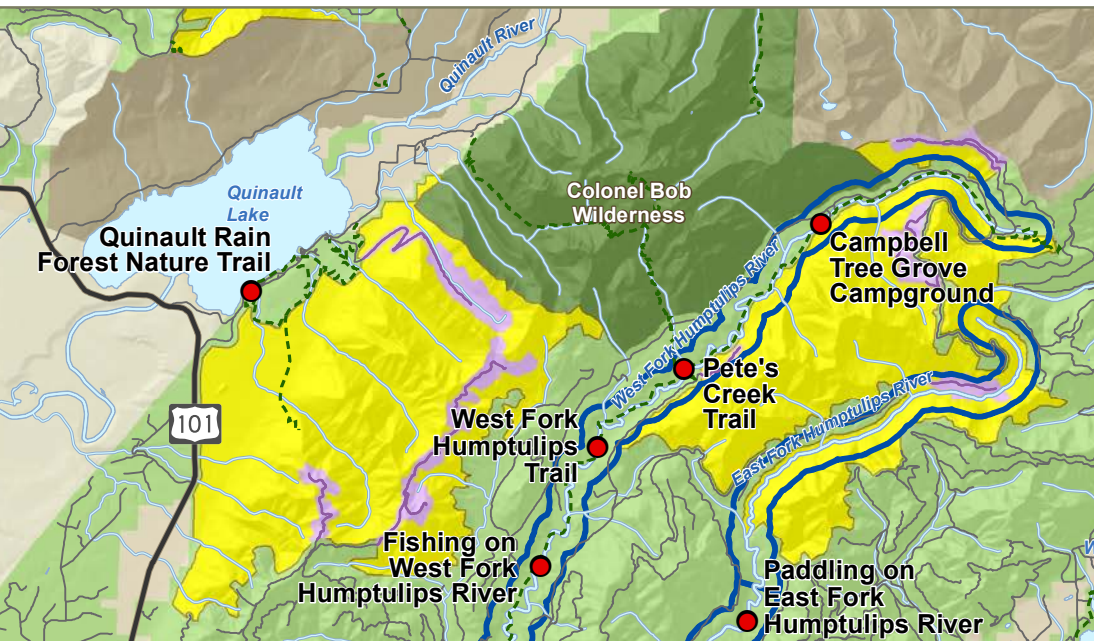
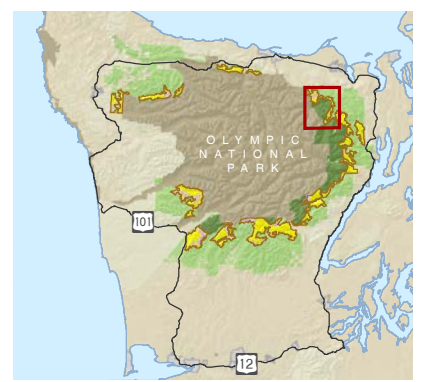
# DESTINATION Wild Olympics

*The World-Class Outdoor Recreation Destinations of the Wild Olympics Wilderness and Wild & Scenic Rivers Act*



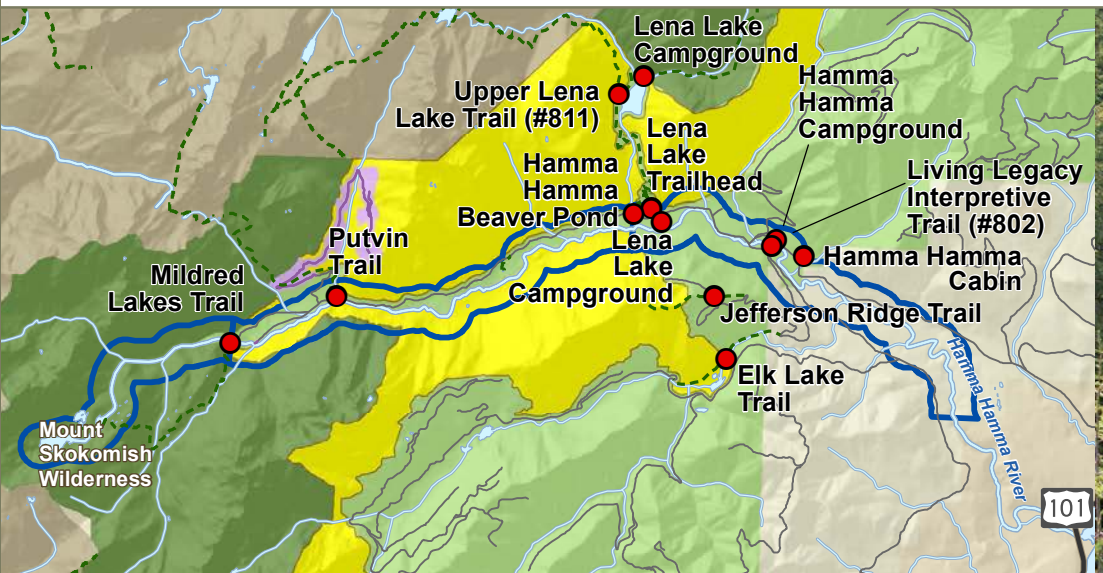
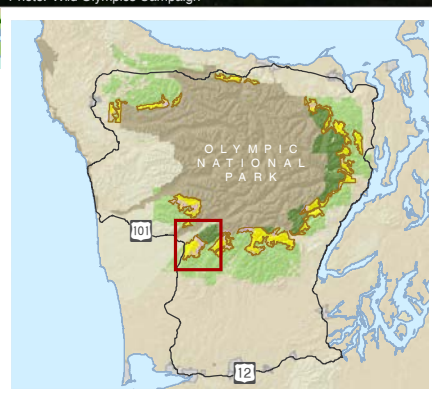
## DUNGENESS VALLEY

The **Dungeness River** flows from the high peaks of the Olympic Mountains to the undeveloped ocean shoreline of the Dungeness Spit offering plenty of great recreation along the way. Dungeness Forks Campground is located in a spectacular old-growth grove and serves as a base camp for exploring the Lower Gray Wolf and Upper Dungeness Trails which wind through proposed and designated Wilderness areas. For mountain bikers, the Dungeness-Gold Creek loop is a prized backcountry ride along the Dungeness river which is proposed for wild and scenic designation.



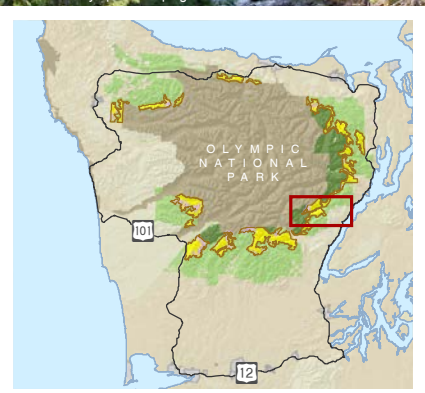
## SOUTH QUINAULT RIDGE

South of Lake Quinault is the **South Quinault Ridge**. This remarkable place is home to one of the most extensive block of ancient rain forest not already protected by wilderness designation in the lower 48 states. Huge Douglas-fir and western red cedar trees are numerous, sometimes topping out at 300 feet and supporting girths of nine feet or more. Big Sitka spruce adds another dimension of character to the old forest. A network of trails provide access to the ancient forest of South Quinault Ridge and the Quinault Rain Forest Nature Trail makes for a great short family-friendly hike that lets one take in these impressive trees that form the boundary of proposed Wilderness.



## HAMMA HAMMA VALLEY

The **Hamma Hamma Valley** makes a great destination for a weekend trip with opportunities to camp or stay in a historic Forest Service guard station. The valley includes the proposed additions to the Brothers Wilderness and Mount Skokomish Wilderness as well as the proposed Hamma Hamma Wild and Scenic River. The Hamma Hamma Campground is a great base for explorations in the valley and provides easy access to the 1.5 mile Living Legacy interpretive trail. The nearby 3.2 mile hike up to Lena Lake takes visitors to Lena Lake Campground, a backcountry destination that is surrounded by the ancient forests that are proposed as wilderness. For those looking for a shorter excursion, the Hamma Hamma Beaver Pond trail, a 0.5 mile wetland trail that is a popular destination for birding, is located along the Hamma Hamma River near the confluence of Lena Creek.



# PARTNERS



patagonia



Wild Olympics  
for our Future  
Wilderness and Wild & Scenic Rivers

Photo: Lateral Line Media